



Our products will lead to the improvement of the work and safety in high places.

POINT × LOCK ONE

PACT×LOCK ONE



PACT integrates fasteners such as bolt, nut, washer, supplied separately, with the thin film that envelopes them.

Our own film technology enhances remarkably your workability without losing the original function of bolt, nut and washer.

LOCK ONE washer is a spring washer that prevents nut from falling and loosening.

Today, we succeed to unify LOCK ONE washer with hexagon nut because of film technology.

That is PACT×LOCK ONE.

Until then, you needed to insert in order LOCK ONE washer to Hexagon nut into 12 point socket. But in this case, if you put them in the wrong order, the effect disappears completely. PACT×LOCK ONE unified by the thin film, promises you a great improvement for your operation without a great deal of trouble to charge them into socket.

Our products are also expected to prevent forgetting LOCK ONE.

Advantages

Point

Slack and falling prevention efficiency even after 30,000 vibration frequency.*

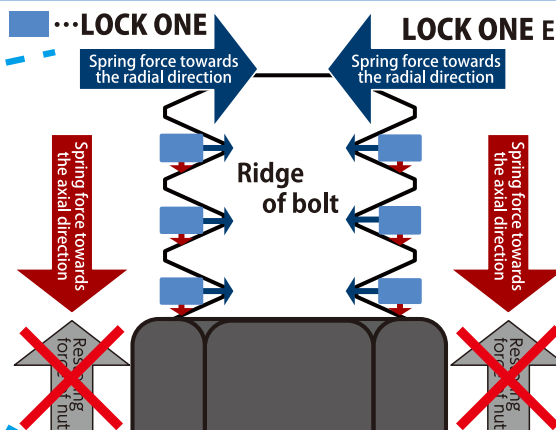
*This is the result, using a device for impulsive vibration test in accordance with NAS3350(National Aerospace Standards).



You can find out the construction site operation video from here!

That is why our products do not loosen!

When fastening



LOCK ONE Enlarged Illustration of fastening part

If you join LOCK ONE with nut, spring force exerts an effect on the axial direction that produces an effect on restoring force (against loosening and falling) of nut. Moreover, bolt's spring force toward the radial direction is applied and can keep up fastening condition.

To sum up, these two forces are the reason why LOCK ONE does not loosen.



IKEDA NEJI SHOKAI CO., LTD.

www.ikedaneji.jp

[Head Office]

420-13 Motoichiba, Fuji City, Shizuoka Prefecture, 416-0906, JAPAN

TEL/+81-(0)545-64-2048

FAX/+81-(0)545-63-9092

PACT (film) processing realizes the unification with LOCK ONE.

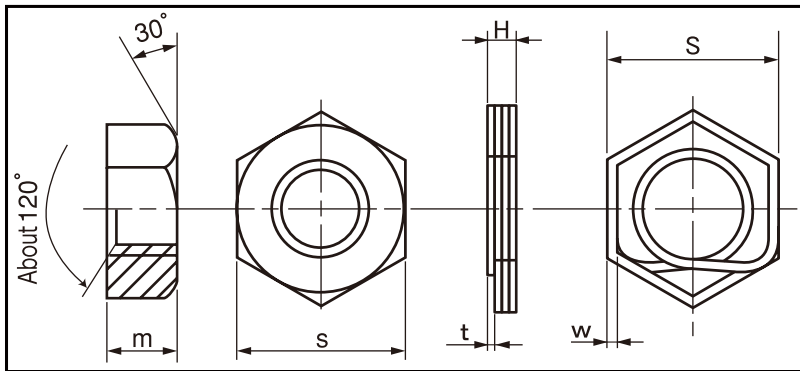


The unification by film **saves you a great deal of trouble** and provides the enhance of work efficiency.

There is the advantage that **prevents mistaking the procedure of preparation and losing the parts.**

It's recommended when you use a lot of LOCK ONE and work in high places.

The following sizes are held in inventory. Please contact us.



Nominal designation	Stainless hexagon nut			Stainless LOCK ONE		
	Pitch Coarse	Height (m)	Width across flats (s)	Subtense (S)	Rectangular wire (w×t)	Height (H)(About)
M6	1.0	5	10	10	0.70 × 0.50	2.0
M8	1.25	6.5	13	13	0.88 × 0.63	2.5
M10	1.5	8	17	17	1.05 × 0.75	3.0
M12	1.75	10	19	19	1.23 × 0.88	3.5
M16	2.0	13	24	24	1.40 × 1.00	4.0
W3/8	※ 16	8	17	17	1.05 × 0.75	3.0
W1/2	※ 12	10	21	21	1.40 × 1.00	4.4

※It shows threads per inch for Whit.

LOCK ONE
Material: SUS304WPB

The film comes off from tear-off line, when fastening.
(Please discard it, once the film comes off.)



N0-02-6PS0(Metric)
N0-02-6PS2(Whit)

Hexagon Nut (type-1)
Material: SUS

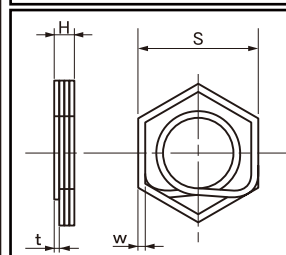
This photo is for illustration purposes. Actual product is hexagon nut type-1.

Recommended Example

- Fall prevention of fastening components due to machine vibration.
- Slack prevention of bolts and nuts after the installation of materials in high places.
- Slack prevention of construction materials and bolts, nuts in the engineering work site.
- For the structures that locking is necessary against earthquakes and high winds.

Standards Chart & Drawer

LOCK ONE
Material: SUS304WPB
N0-02-60S0(Metric)
N0-02-60S2(Whit)



Nominal designation	Subtense (s)	Rectangular wire (w×t)	Height (H)(About)
M4	7	0.50 × 0.35	1.4
M5	8	0.60 × 0.40	1.6
M6	10	0.70 × 0.50	2.0
M8	13	0.88 × 0.63	2.5
M10	17	1.05 × 0.75	3.0
M12	19	1.23 × 0.88	3.5
M16	24	1.40 × 1.00	4.0
M20	30	1.75 × 1.25	5.0
M22	32	1.75 × 1.25	5.0
M24	36	2.10 × 1.50	6.0
W3/8	17	1.05 × 0.75	3.0
W1/2	21	1.40 × 1.00	4.4

Procedure



1 Put in order LOCK ONE to nut or just put PACT × LOCK ONE into 12 point socket wrench.



2 Fasten external thread



3 Once LOCK ONE changes to the shape as dodecagon and contact firmly with nut, that's finished.

Note
In case of gap between nut and LOCK ONE, please retighten it by hand and contact it with the end face of nut.

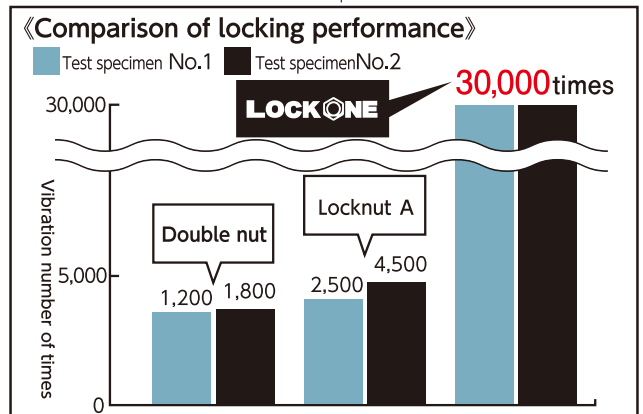


The shape from the side.



About vibration test

The result below is confirmed after the test in accordance with NAS(National Aerospace Standards), using a device for the impulsive vibration test.



Compared to our products.